



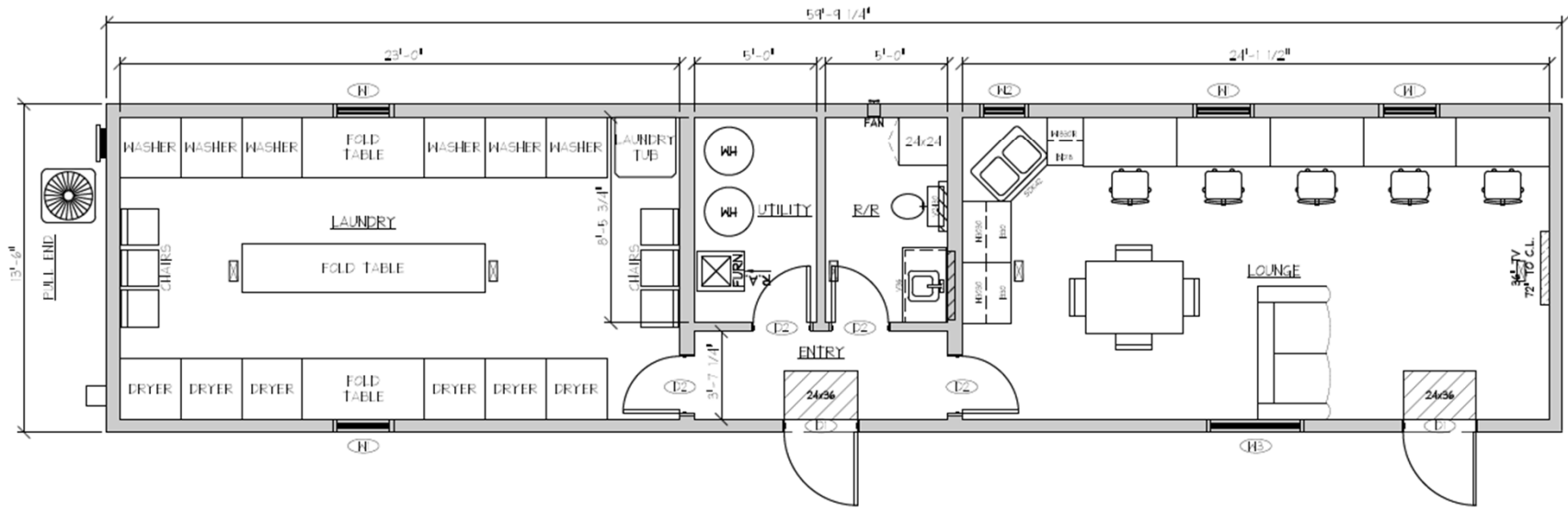
MODULAR GENIUS, INC.  
888-420-1113  
[www.modulargenius.com](http://www.modulargenius.com)

**SMART BUILDING SPACE PLANNER**

<b>DRAWING NUMBER:</b> Laundry/Café ManCamp	<b>SQUARE FOOTAGE:</b> 840 Sq. Ft.
<b>BUILDING SIZE:</b> 14'-0" x 60'-0"	<b>BUILDING USE:</b> Laundry/Café

DOOR SCHEDULE		
DOOR	DESCRIPTION	ROUGH OPENING
(E)	36X80 EXTERIOR DOOR	36-1/2" X 80-1/2"
(E2)	30X77 INTERIOR DOOR	30-1/4" X 79"

WINDOW SCHEDULE		
WINDOW	DESCRIPTION	ROUGH OPENING
(H)	30' x 30' VERTICAL SLIDER	30-1/2" X 29-1/2"
(RE)	24' x 30' VERTICAL SLIDER	24-1/2" X 29-1/2"
(RE)	48' x 36' VERTICAL SLIDER	48-1/2" X 35-1/2"



**Layout 3 (Laundry/Café ManCamp)**



MODULAR GENIUS, INC.  
888-420-1113  
[www.modulargenius.com](http://www.modulargenius.com)

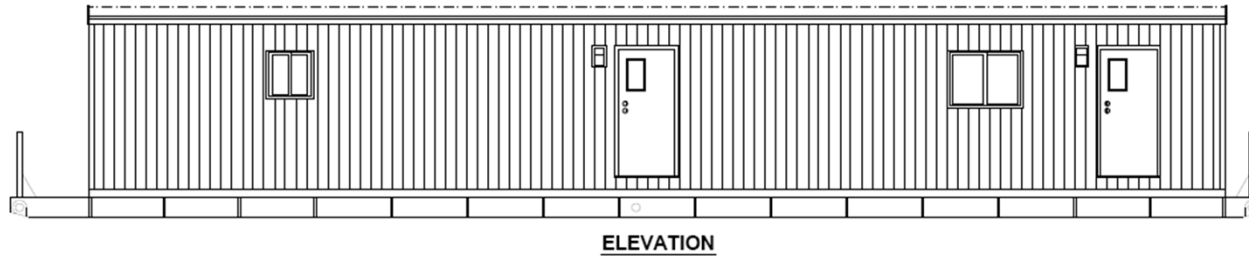
### SMART BUILDING SPACE PLANNER

**DRAWING NUMBER:**  
Laundry/Café ManCamp

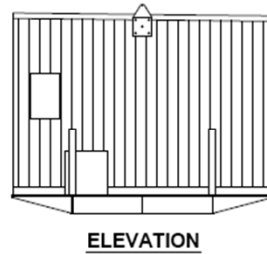
**SQUARE FOOTAGE:**  
840 Sq. Ft.

**BUILDING SIZE:**  
14'-0" x 60'-0"

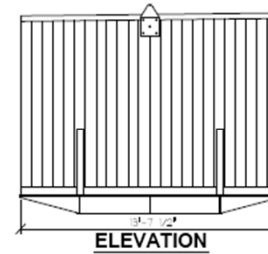
**BUILDING USE:**  
Laundry/Café



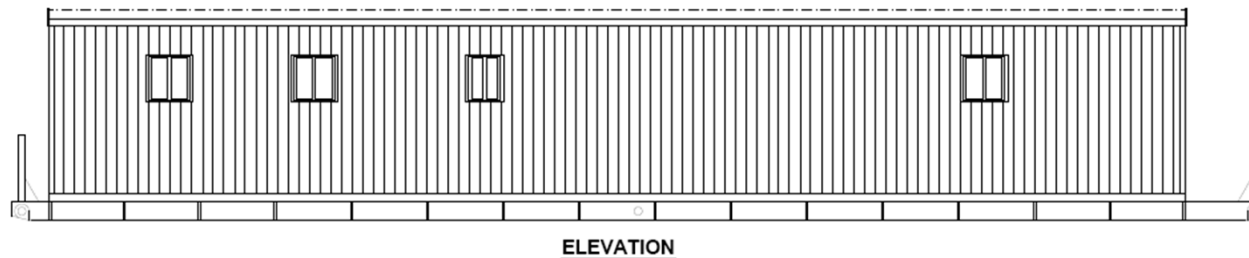
ELEVATION



ELEVATION



ELEVATION



ELEVATION

### Layout 3 (Laundry/Café ManCamp)

## Layout # 3 (Laundry/Café ManCamp) Specifications

October 5, 2011

Layout # 3 (Laundry/Café Man Camp)  
14X60 Laundry and Café

Quantity	U/M	Description
<b>FRAME</b>		
1	ea	14x66 Outrigger Skid Frame 12"MIB - 8" Cross (14x60) Box
1		Cable Holder
1		Steel Ladder
1		Cable / Landyard
1		Condensor Cover
2	sets	Fold Down Steps
<b>FLOOR</b>		
27	pcs	7/16" OSB 4x8 Under side - painted
1	pcs	176" x 61' 30 gauge galv Bottom Bd
46	pcs	2x12-14 #2 SPF Floor Joist 16"oc Cut to 156"
20	pcs	2x12-12 #2 SPF Rim Rail
4	pcs	2x12-14 #2 SPF Rim Rail
40	pcs	Hold down Plates with 2 bolts, nuts and washers (joist hold down)
690	sf	R38 Unfaced Insulation 15"
150	sf	6" Thermax under floor duct
27	pcs	5/8" 4x8 T & G plywood U/L Screwed and Glued
27	pcs	5/8" 4x8 PTS Plywood
2	pcs	Close off tape
5	ea	8" Raised Floor to RR with vent
12	ea	Qt. tubes Const. Adhesive
562	sf	12" x 12" VCT including glue
250	sf	Commercial Carpet including glue
86	ea.	Hold down bolts/washer/nuts (rim rail to frame)
104	ea	lags (one per stud opening)
416	ea	Screws (four per stud opening)
650	lf	Foam Seal

**EXTERIOR - INTERIOR WALLS**

148	pcs	2x6-851/2" #2 SPF Ext Wall Stud 16" oc	
27	pcs	2x6-87" SPF Wall Stud restroom at showers 16" oc	
12	pcs	2x4-87" Interior Studs	
40	pcs	2x6-14 #2 SPF Plate single bottom - double top	
2	pcs	2x4-14 #2 SPF Plate single top and bottom	
7	ea	Window Header	
7	ea	Door Header	
65	ea	Cedar Embossed Painted Panels	Color:
65	ea	1 1/2" Painted Battens	
16	ea	5/8" Drywall	
16	tb	Qts Const. Adhesive	
1110	sf	R21 KF Exterior Wall insulation	
280	sf	R11-15" UF Insulation Int Walls	
132	lf	6" Vinyl Cove Base	
110	lf	Pf Baseboard	
91	lf	Window Jamb	
91	lf	Window Casing	
85	lf	Door Jamb	
153	lf	Door Casing	
238	lf	Crown mold	
68	lf	Door stop	
1184	sf	29ga Steel Low Rib Siding	
4	pcs	10' O.S. Corners	
32	pcs	10' - 1 1/2" x 2" Z mold (top and bottom start)	
22	pcs	10' J-channel (around windows, doors, panel boxes etc)	
1184	sf	House wrap	
37	pcs	7/16" OSB Exterior Sheathing	
0.25	ea	Foam Set (1/4 of cannister) Foam around exterior boxes	
8		J-Blocks	
2	ea	14x14 Access panels	
32	lf	6 " OS Corner Wrap (protecta tope on outside of osb sheathing	
2	ea	Recess boxes for exterior lights by doors	
1000	lf	Foam Seal	

**ROOFS**

63	pcs	2x12-14 #2 SPF Tapered Rafters 12"oc 100# Load	Cut to 159"
9	pcs	2x12-12 #2 SPF Rim Joint	
840	sf	R30 KF Insulation	
1100	lf	Foam Seal	
15	pcs	1/2" 4x12 Gypsum Sea Spray to bottom of Rafters	
1	pcs	5/8" 4x10 Gypsum	
915	sf	TPO Roofing System	
27	pcs	7/16" OSB FR Roof Deck	
384	pcs	Screws and Plates	

**EXTERIOR - INTERIOR DOORS**

2	ea	36" x 80" Telstar Doors w/5"x20" Vision Panel with Frame
2	ea	Deadbolts with refrigerator latches
2	ea	Check Chain Heavy Duty (Tractor Supply)
12	ea	Butterfly hinges
12	ea	Door Stops
2	ea	30"x77" Restroom Door HC in PF Ash Frame
2	ea	32"x80" To Laundry and Café
1	ea	Knobs (Privacy)
3	ea	Knobs (Passage)

**WINDOWS**

1	ea	30x30 Horizontal Vinyl Slider - Insulated with Low E Obsured Glass
5	ea	36x36 Horizontal Vinyl Slider - Insulated with Low E
1		24x30 Horizontal Vinyl Slider - Insulated with Low E
9	ea	Window / Door Eyebrows

**ELECTRICAL**

1	ea	300. AMP Nema 3R Panel Box
1	ea	1 1/2" Service Entrance Conduit thru Wall
600	lf	12-2 MC Cable w/ground
2	ea	#4325 Seagull Exterior Light up 78" to the top
2	ea	Exit/Emergency light w/battery back-up
17	ea	20 amp recept 18" to bottom with box-plate-nuts
8	ea	20 amp GFIREcept to bottom with box-plate-nuts
4	ea	20 amp GFI recept with Weatherproof box & cover
11	ea	Single pole switch with box-cover-nuts

**ELECTRICAL (continued)**

5	ea	Data boxes with pvc conduit thru ceiling & covers 18" to bottom
1	ea	4x4 AV box-conduit-cover
	ea	4 11/16" Sq Box 2 1/8" Deep w/Walker DJ111WC4 cover
11	ea	12" x 48" 2T w/electronic ballast & T12 34 watt bulbs Wraps
8	ea	30 amp Breaker Water heater with wiring
1	ea	40 amp Breaker HVAC with wiring
8	ea	20 amp Breakers
1	ea	Furnace HVAC disconnect
1	ea	Water heater disconnect
1	ea	TV outlet duplex recept
1	ea	Cat 5 and Phone wiring
4	ea	Interconnected Smoke Detectors
1	ea	TV Coax to Front -jump to rear
1	ea	Exhaust Fans-Bath
1	ea	36" TV with Mounting Brackets
0	ea	26" TV with Mounting Brackets

**HVAC**

1	ea	2.5 ton Cooling 17KW heat pump Closet Mt with precharge line Condenser Line hook up
55	ft	Metal Floor Duct Supply Assembly
35	ft	Metal Floor Duct Return Assembly
11	ea	Supply Floor Diffusers
6	ea	Return Air Diffuser
1	ea	T-stat (not in equipment room)

**PLUMBING & ACCESSORIES**

2	ea	40 gallon Electric Water Heater w /pan, die unions, pressure valve
2	ea	Vent Kit
6	ea	Washer Boxes
1	ea	Pex Plumbing Supply w/ supplies, wastes, and shut off to fixtures PVC DWV manifold to (2) 3" outlets with 3" vents and roof flashing
1	ea	Elongated Water Closet Tank with Pressure Assit,Seat, Wax Ring
1	ea	37" Culture Marble Vanity Top
1	ea	Single Arm Lav Faucet w/strainer, traps
1	ea	Medicine Cabinet Top 4 lamp light bar 30"

**PLUMBING & ACCESSORIES (Continued)**

1	ea	TP Holder
1	ea	18" Towel Bar
1	ea	heat trace kit
1	ea	3/4" Nipple with Check Valve
1	ea	Water Inlet
1	ea	Kitchen Sink with Faucet-Strainers-Traps-Waste-Faucet-Supply-Shut

**CABNETS-COUNTERS-FURNITURE - MISC**

6	ea	Dryer vents duct and J-Blocks
2	ea	60" clothes Tables
1	ea	36" Medicine Cabinet
3	ea	4 Hook Coat Hooks (2) inside entry doors (1) inside laundry
6	ea	HD Washing Machines
6	ea	HD Electric Dryer Units w/cords
1	ea	120" Clothes Table
1	ea	Table with 4 Chairs
6	ea	Folding Chairs
1	ea	Triple Recliner
1	ea	Shelf Kit Under TV
24'	ea	Work Counters with Support Brackets-Grommets-Trim
13'	ea	Base Cabinets
13'	ea	Wall Cabinet
1	ea	Utility Sink with faucet supply waste
5	ea	Office Chairs with keyboard trays