



MODULAR GENIUS, INC.  
888-420-1113  
[www.modulargenius.com](http://www.modulargenius.com)

**SMART BUILDING SPACE PLANNER**

**DRAWING NUMBER:**  
49 Man Complex ManCamp

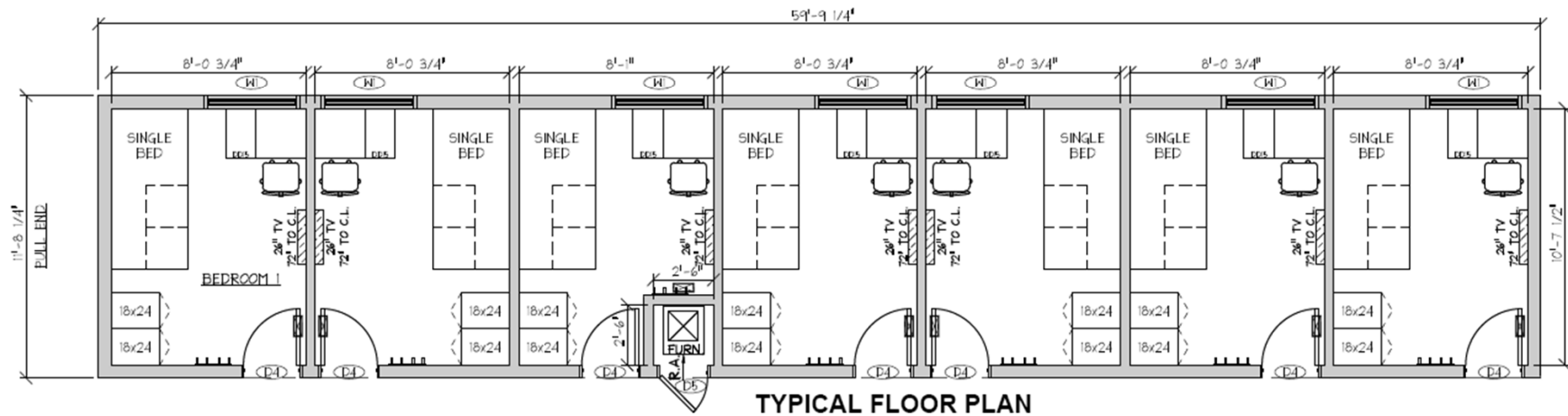
**SQUARE FOOTAGE:**  
6,720 Sq. Ft.

**BUILDING SIZE:**  
28'-0" x 240'-0"

**BUILDING USE:**  
Living/Sleeping Qtrs

DOOR SCHEDULE		
DOOR	DESCRIPTION	ROUGH OPENING
D1	36X80 EXTERIOR DOOR	36-1/2"x80-1/2"
D2	36X80 INTERIOR DOOR	36-1/4"x82"
D3	30X80 INTERIOR DOOR	32-1/4"x82"
D4	30X77 INTERIOR DOOR	30-1/4"x79"
D5	24X77 INTERIOR DOOR	24-1/4"x79"

WINDOW SCHEDULE		
WINDOW	DESCRIPTION	ROUGH OPENING
W1	48" x 36" VERTICAL SLIDER	48-1/2"x35-1/2"
W2	30" x 30" VERTICAL SLIDER	30-1/2"x29-1/2"



**Layout 4 (49 Man Complex ManCamp)**



MODULAR GENIUS, INC.

888-420-1113

[www.modulargenius.com](http://www.modulargenius.com)

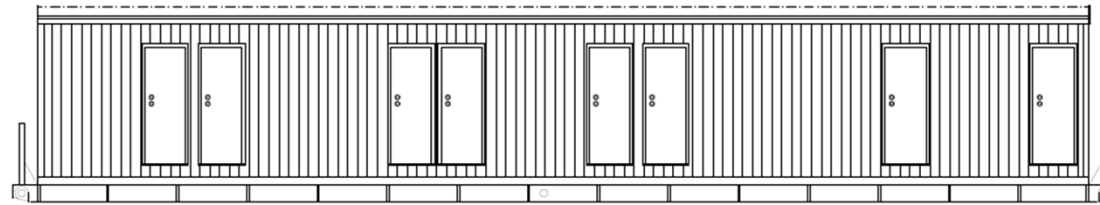
## SMART BUILDING SPACE PLANNER

**DRAWING NUMBER:**  
49 Man Complex ManCamp

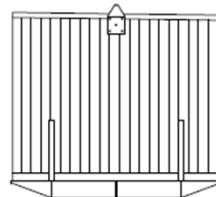
**SQUARE FOOTAGE:**  
6,720 Sq. Ft.

**BUILDING SIZE:**  
28'-0" x 240'-0"

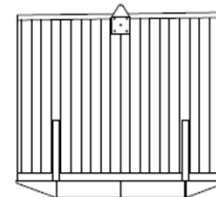
**BUILDING USE:**  
Living/Sleeping Qtrs



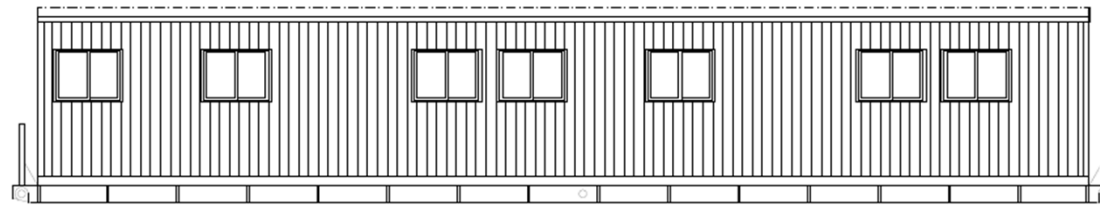
ELEVATION



ELEVATION



ELEVATION



ELEVATION

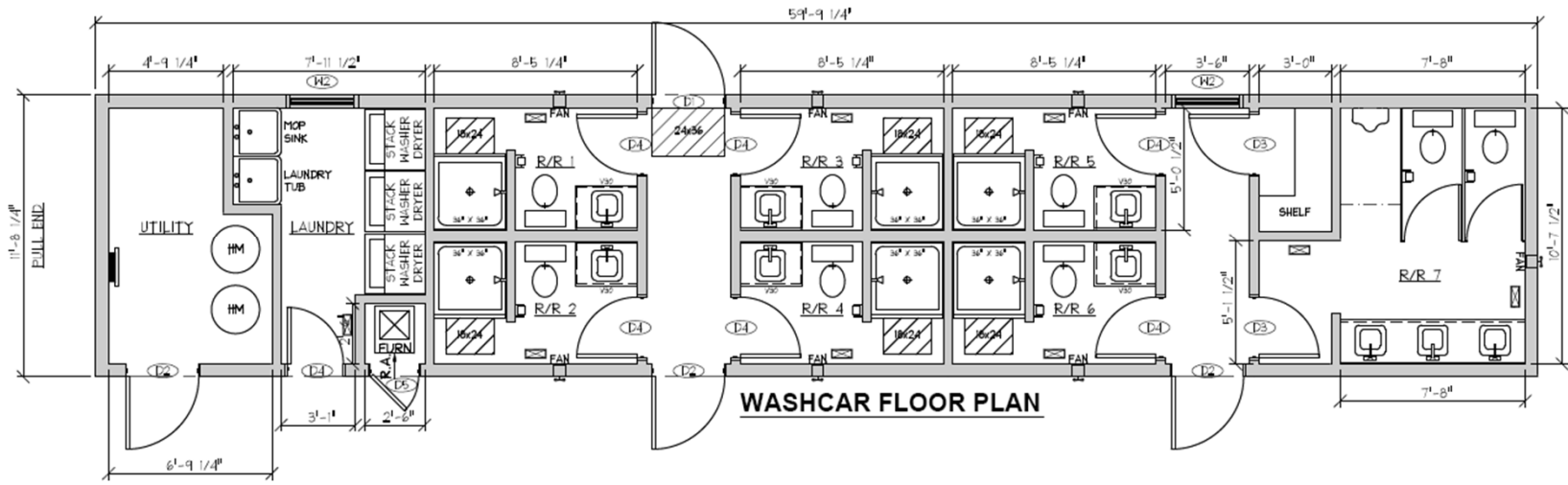
TYPICAL UNIT

## Layout 4 (49 Man Complex ManCamp)



MODULAR GENIUS, INC.  
888-420-1113  
[www.modulargenius.com](http://www.modulargenius.com)

SMART BUILDING SPACE PLANNER	
<b>DRAWING NUMBER:</b> 49 Man Complex ManCamp	<b>SQUARE FOOTAGE:</b> 6,720 Sq. Ft.
<b>BUILDING SIZE:</b> 28'-0" x 240'-0"	<b>BUILDING USE:</b> Living/Sleeping Qtrs



**Layout 4 (49 Man Complex ManCamp)**



MODULAR GENIUS, INC.  
888-420-1113  
[www.modulargenius.com](http://www.modulargenius.com)

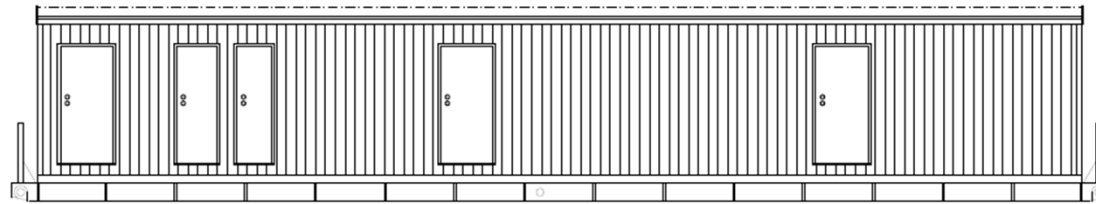
### SMART BUILDING SPACE PLANNER

**DRAWING NUMBER:**  
49 Man Complex ManCamp

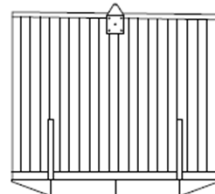
**SQUARE FOOTAGE:**  
6,720 Sq. Ft.

**BUILDING SIZE:**  
28'-0" x 240'-0"

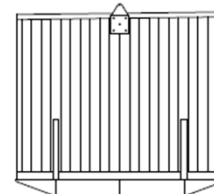
**BUILDING USE:**  
Living/Sleeping Qtrs



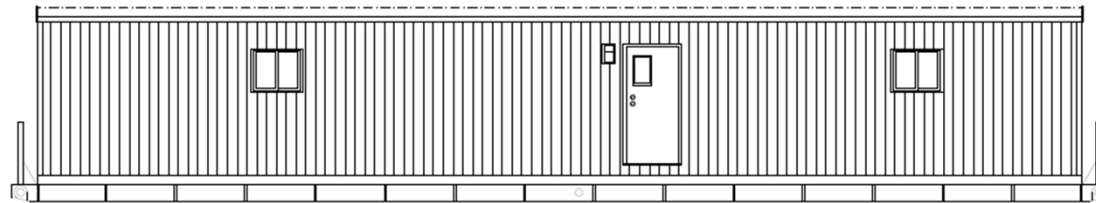
ELEVATION



ELEVATION



ELEVATION



ELEVATION

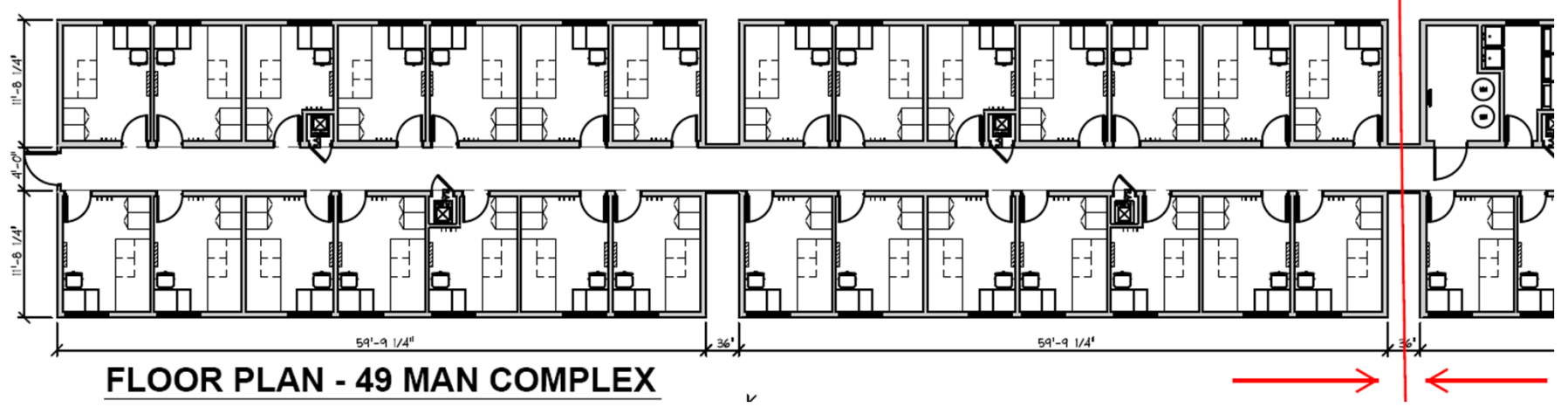
WASHCAR UNIT

## Layout 4 (49 Man Complex ManCamp)



MODULAR GENIUS, INC.  
888-420-1113  
[www.modulargenius.com](http://www.modulargenius.com)

SMART BUILDING SPACE PLANNER	
DRAWING NUMBER: 49 Man Complex ManCamp	SQUARE FOOTAGE: 6,720 Sq. Ft.
BUILDING SIZE: 28'-0" x 240'-0"	BUILDING USE: Living/Sleeping Qtrs



**FLOOR PLAN - 49 MAN COMPLEX**

**Layout 4 (49 Man Complex ManCamp)**



MODULAR GENIUS, INC.

888-420-1113

[www.modulargenius.com](http://www.modulargenius.com)

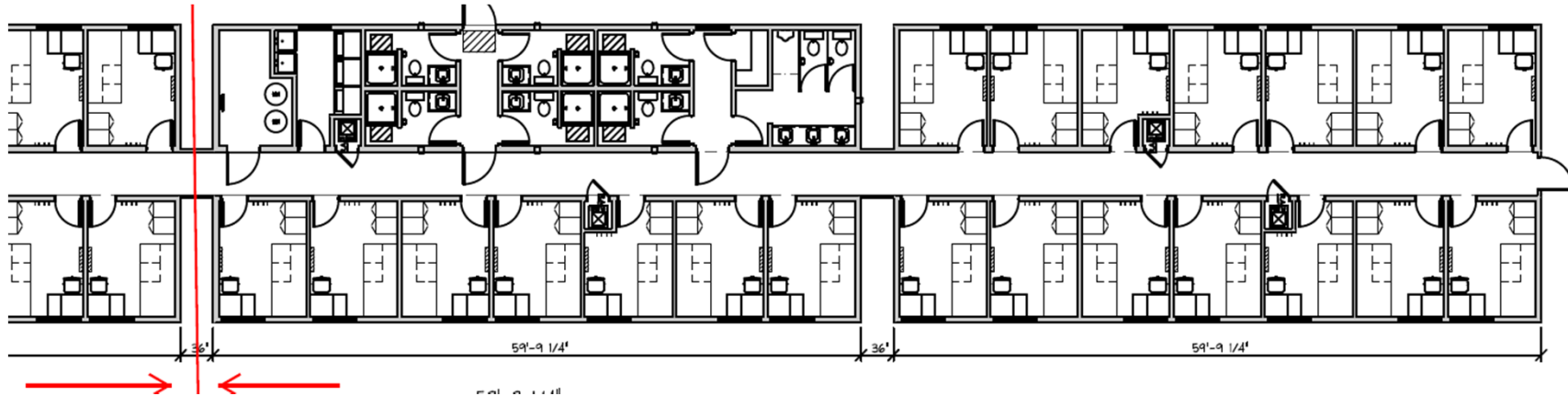
## SMART BUILDING SPACE PLANNER

**DRAWING NUMBER:**  
49 Man Complex ManCamp

**SQUARE FOOTAGE:**  
6,720 Sq. Ft.

**BUILDING SIZE:**  
28'-0" x 240'-0"

**BUILDING USE:**  
Living/Sleeping Qtrs



**Layout 4 (49 Man Complex ManCamp)**

## Layout # 4 49 Man Complex ManCamp Specifications

October 5, 2011

**12x60 Laundry / Restroom / Toilet**

**1 REQUIRED**

Quantity	U/M	Description
<b>FRAME</b>		
1	ea	12x64 Outrigger Skid Frame 12"MIB - 8" Cross (14x60) Box
2		Steel Ladder
4		Cable / Landyard
<b>FLOOR</b>		
22	pcs	7/16" OSB 4x8 Under side - painted 142" x 61' 30 gauge galv Bottom
1	pcs	Bd
46	pcs	2x12-12 #2 SPF Floor Joist 16"oc
20	pcs	2x12-12 #2 SPF Rim Rail
4	pcs	2x12-12 #2 SPF Rim Rail
40	pcs	Hold down Plates with 2 bolts, nuts and washers (joist hold down)
540	sf	R38 Unfaced Insulation 15"
150	sf	6" Thermax under floor duct
22	pcs	5/8" 4x8 T & G plywood U/L Screwed and Glued
22	pcs	5/8" 4x8 PTS Plywood
2	pcs	Close off tape
6	pcs	8" raised Floor
12	ea	Qt. tubes Const. Adhesive
654	sf	12" x 12" VCT including glue
86	ea.	Hold down bolts/washer/nuts (rim rail to frame)
104	ea	lags (one per stud openng)
416	ea	Screws (four per stud opening)
650	lf	Foam Seal

**EXTERIOR - INTERIOR WALLS**

188	pcs	2x6-85 1/2" #2 SPF Ext Wall Stud 16" oc
90	pcs	2x4-87" Interior Studs
38	pcs	2x6-14 #2 SPF Plate single bottom - double top
15	pcs	2x4-12 #2 SPF Plate single top and bottom
2	ea	Window Header
3	ea	Door Header
84	ea	Cedar Embossed Painted Panels Color:

Modular Genius, Inc.

[www.modulargenius.com](http://www.modulargenius.com)

(888) 420-1113

---

**EXTERIOR - INTERIOR WALLS (continued)**

---

84	ea	1 1/2" Painted Battens
26		1/2"FRP on OSB
16	tb	Qts Const. Adhesive
1080	sf	R21 KF Exterior Wall insulation
675	sf	R11-15" UF Insulation Int Walls
300	lf	6" Vinyl Cove Base
0	lf	Pf Baseboard
28	lf	Window Jamb
28	lf	Window Casing
162	lf	Door Jamb
323	lf	Door Casing
300	lf	Crown mold
162	lf	Door stop
1154	sf	29ga Steel Low Rib Siding
4	pcs	10' O.S. Corners
31	pcs	10' - 1 1/2" x 2" Z mold (top and bottom start)
26	pcs	10' J-channel (around windows, doors, panel boxes etc)
1154	sf	House wrap
34	pcs	7/16" OSB Exterior Sheathing
0.25	ea	Foam Set (1/4 of cannister) Foam around exterior boxes
5		J-Blocks
32	lf	6 " OS Corner Wrap (protecta tope on outside of osb sheathing
1	ea	Recess boxes for exterior lights by doors
1000	lf	Foam Seal

---

**ROOF**

---

63	pcs	2x12-14 #2 SPF Tapered Rafters 12"oc 100# Load
9	pcs	2x12-12 #2 SPF Rim Joint
690	sf	R30 KF Insulation
1100	lf	Foam Seal
15	pcs	1/2" 4x12 Gypsum Sea Spray to bottom of Rafters
60	lf	Soffit and under side corridor trim
60	lf	Roof Caps & Seals
793	sf	TPO Roofing System
22	pcs	7/16" OSB FR Roof Deck
384	pcs	Screws and Plates



**EXTERIOR - INTERIOR DOORS**

3	ea	36" x 80" Telstar Doors
3	ea	Deadbolts with refrigerator latches
1	ea	30"x80" Telstar Door (Furnace)
1	ea	Knob (Keylock)
3	ea	Check Chain Heavy Duty (Tractor Supply)
12	ea	Door Stops
6	ea	30"x 77" HC in PF Ash Frame Restroom
2	ea	30"x 80" HC in PF Ash Frame
6	ea	Knobs (Privacy)
2	ea	Knobs (Passage)

**WINDOWS**

2	ea	36x36 Horizontal Vinyl Sliders - Insulated with Low E
2	ea	36" Mini Blinds
5	ea	Window / Door Eyebrows

**ELECTRICAL**

1	ea	300. AMP Nema 3R Panel Box
1	ea	1 1/2" Service Entrance Conduit thru Wall
700	lf	12-2 MC Cable w/ground
1		#4325 Seagull Exterior Light up 78" to the top
1	ea	Exit/Emergency light w/battery back-up
2	ea	20 amp recept 18" to bottom with box-plate-nuts
8		20 amp GFIREcept to bottom with box-plate-nuts
7	ea	20 amp GFI recept with Weatherproof box & cover
12	ea	Single pole switch with box-cover-nuts
0	ea	Data boxes with pvc conduit thru ceiling & covers 18" to bottom
1	ea	4x4 AV box-conduit-cover
1	ea	4 11/16" Sq Box 2 1/8" Deep w/Walker DJ111WC4 cover
12	ea	12" x 48" 2T w/electronic ballast & T12 34 watt bulbs Wraps
2	ea	30 amp Break WH
1	ea	40 amp Breaker HVAC with wiring
9	ea	20 amp Breakers
1	ea	Furnace HVAC disconnect
3	ea	6" closet drum lights for closet
0	ea	TV outlet duplex recept
0	ea	Cat 5 and Phone wiring

Modular Genius, Inc.

[www.modulargenius.com](http://www.modulargenius.com)

(888) 420-1113

**ELECTRICAL (continued)**

6	ea	Interconnected Smoke Detectors
0	ea	TV Coax to Front -jump to rear
	ea	36" TV with Mounting Brackets
0	ea	26" TV with Mounting Brackets

**HVAC**

1	ea	2.5 ton Cooling 17KW heat pump Closet Mt with precharge line Condenser Line Roof Top
55	ft	Metal Floor Duct Supply Assembly
40	ft	Metal Floor Duct Return Assembly
710	ea	Supply Floor Diffusers
10	ea	Return Air Diffuser
1	ea	T-stat (not in equipment room)

**PLUMBING & ACCESSORIES**

2		40 gallon Electric Water Heater w /pan, die unions, pressure valve
2		Vent Kit
6		36" Showers with faucets,head, drains, curtain, drain,rod
1		Plex Plumbing Supply w/ supplies, wastes, and shut off to fixtures
1		PVC DWV manifold to (2) 3" outlets with 3" vents and roof flashing
8		Elongated Water Closet Tank with Pressure Assit,Seat, Wax Ring
6		31" Culture Marble Vanity Top
9		Single Arm Lav Faucet w/strainer
9		24x36 Mirrors
8		TP Holder
6		18" Towel Bar
2		heat trace kit
1		3/4" Nipple with Check Valve
1		Water Inlet
1		96" Restroom Counter with 3 Drop in Sinks with traps- waste- supply
1		Urinal with Flush Valve
1		Set of Modesty Partitions

**CABNETS-COUNTERS-FURNITURE - MISC**

7	ea	Hook Coat Hooks (1) inside entry doors
1	ea	Laundry tub with Faucet and Drains
1	ea	Mop Sink with Faucet and Drains
3	ea	Stackable Washer / Dryer Units
6	ea	31" Vanities
3	ea	Dryer vents duct and J-Blocks
6	ea	V2430 Cabinet above Toilet
1	ea	Closet Shelf

**12x60 Sleeping Quarters for 49 Unit**

**7 REQUIRED**

Quantity	U/M	Description
<b>FRAME</b>		
7	ea	12x64 Outrigger Skid Frame 12"MIB - 8" Cross (14x60) Box
2		Steel Ladder
4		Cable / Landyard

**FLOOR**

154	pcs	7/16" OSB 4x8 Under side - painted
7	pcs	142" x 61' 30 gauge galv Bottom Bd
322	pcs	2x12-12 #2 SPF Floor Joist 16"oc
140	pcs	2x12-12 #2 SPF Rim Rail
28	pcs	2x12-12 #2 SPF Rim Rail
280	pcs	Hold down Plates with 2 bolts, nuts and washers (joist hold down)
3780	sf	R38 Unfaced Insulation 15"
1050	sf	6" Thermax under floor duct
154	pcs	5/8" 4x8 T & G plywood U/L Screwed and Glued
154	pcs	5/8" 4x8 PTS Plywood
14	pcs	Close off tape
84	ea	Qt. tubes Const. Adhesive
4578	sf	12" x 12" VCT including glue
602	ea.	Hold down bolts/washer/nuts (rim rail to frame)
728	ea	lags (one per stud openng)
2912	ea	Screws (four per stud opening)
4550	lf	Foam Seal

**EXTERIOR - INTERIOR WALLS**

1008	pcs	2x6-851/2" #2 SPF Ext Wall Stud 16" oc	
560	pcs	2x4-87" Interior Studs	
217	pcs	2x6-14 #2 SPF Plate single bottom - double top	
91	pcs	2x4-12 #2 SPF Plate single top and bottom	
49	ea	Window Header	
49	ea	Door Header	
532	ea	Cedar Embossed Painted Panels	Color:
532	ea	1 1/2" Painted Battens	
112	tb	Qts Const. Adhesive	
7560	sf	R21 KF Exterior Wall insulation	
465	sf	R11-15" UF Insulation Int Walls	
56	lf	6" Vinyl Cove Base	
1862	lf	Pf Baseboard	
700	lf	Window Jamb	
700	lf	Window Casing	
952	lf	Door Jamb	
1785	lf	Door Casing	
1862	lf	Crown mold	
952	lf	Door stop	
8078	sf	29ga Steel Low Rib Siding	
28	pcs	10' O.S. Corners	
217	pcs	10' - 1 1/2" x 2" Z mold (top and bottom start)	
182	pcs	10' J-channel (around windows, doors, panel boxes etc)	
8078	sf	House wrap	
238	pcs	7/16" OSB Exterior Sheathing	
0.25	ea	Foam Set (1/4 of cannister) Foam around exterior boxes	
32		J-Blocks	
224	lf	6 " OS Corner Wrap (protecta tope on outside of osb sheathing)	
2	ea	Recess boxes for exterior lights by doors	
7000	lf	Foam Seal	

**ROOFS**

441	pcs	2x12-14 #2 SPF Tapered Rafters 12"oc 100# Load
63	pcs	2x12-12 #2 SPF Rim Joint
4830	sf	R30 KF Insulation
7700	lf	Foam Seal

**ROOFS**

105	pcs	1/2" 4x12 Gypsum Sea Spray to bottom of Rafters Soffit and under side corridor
240	lf	trim
240	lf	Roof Caps & Seals
6851	sf	TPO Roofing System
154	pcs	7/16" OSB FR Roof Deck
2688	pcs	Screws and Plates

**EXTERIOR - INTERIOR DOORS**

49	ea	36" x 80" Telstar Doors
49	ea	Deadbolts with refrigerator latches
7	ea	30"x80" Telstar Door (Furnace)
49	ea	Check Chain Heavy Duty (Tractor Supply)
49	ea	Door Stops
49	ea	Knobs (Privacy)
7	ea	Keylock

**WINDOWS**

49	ea	48x36 Horizontal Vinyl Sliders - Insulated with Low E
105	ea	Window / Door Eyebrows

**ELECTRICAL**

7	ea	200. AMP Nema 3R Panel Box
7	ea	1 1/2" Service Entrance Conduit thru Wall
4200	lf	12-2 MC Cable w/ground
1		#4325 Seagull Exterior Light up 78" to the top
8	ea	Exit/Emergency light w/battery back-up
147	ea	20 amp recept 18" to bottom with box-plate-nuts
7	ea	20 amp GFI recept with Weatherproof box & cover
98	ea	Single pole switch with box-cover-nuts
49	ea	Data boxes with pvc conduit thru ceiling & covers 18" to bottom
7	ea	4x4 AV box-conduit-cover
49	ea	4 1 1/16" Sq Box 2 1/8" Deep w/Walker DJ111WC4 cover
49	ea	12" x 48" 2T w/electronic ballast & T12 34 watt bulbs Wraps
7	ea	40 amp Breaker HVAC with wiring
56	ea	20 amp Breakers
7	ea	Furnace HVAC disconnect

**ELECTRICAL (continued)**

7	ea	6" closet drum lights for closet
49	ea	TV outlet duplex recept
49	ea	Cat 5 and Phone wiring
49	ea	Interconnected Smoke Detectors
49	ea	TV Coax to Front -jump to rear
	ea	36" TV with Mounting Brackets
49	ea	26" TV with Mounting Brackets

**HVAC**

7	ea	2.5 ton Cooling 17KW heat pump Closet Mt with precharge line Condenser Line Roof Top
385	ft	Metal Floor Duct Supply Assembly
280	ft	Metal Floor Duct Return Assembly
49	ea	Supply Floor Diffusers
49	ea	Return Air Diffuser
7	ea	T-stat (not in equipment room)

**CABNETS-COUNTERS-FURNITURE - MISC**

49	ea	Hook Coat Hooks (1) inside entry doors
49	ea	Shelf Kit Under TV
49	ea	Office Chairs
49	ea	Twin Size Frames with Pillow top Mattress
49	ea	DD-15 Desk Drawer/Door
49	ea	AD24 Desk Apron Drawer
98	ea	UC1824 Wardrobe
49	ea	40" Desk top counter Shelf Kit for Wardrobe SBSK24-
49	ea	3/4
49	ea	Shelf Kit Under TV