

FRAME & FLOOR	WALLS, WINDOWS, DOORS	ELECTRICAL	PLUMBING	ROOF	EXTERIOR	A/C & HEAT	
AXLES: (1)	BEAM: 8"	WALLS: 2"x4" STUDS / DOUBLE TOP PLATES	ENT. PANEL: (1) 100 amp	TYPE: CPVC SUPPLY	45 MIL BLACK RUBBER	SHEATHING: NONE	HVAC: (1) WA121-A05
HITCH: STD XXX DET	PLUMBING WALL: 2X8	LIGHTS: (4) 4' 2-TUBE w/ LENS	PVC WASTE	TRUSS#659,801 (20'-24'-20') @ 24' OC	BOX 93"		30 AMP EXTERIOR SUB-PANEL
JOISTS: 2"x4" @ 16" o.c.	PLYWOOD SUPPORT: PORCH LIGHT, T-STAT, TP HOLDER LAV, CABINETS, EXTERIOR HVAC DISCONNECT	(ELECTRONIC BALLAST)	WALL HUNG LAV: (1)	MIRROR: (1)	RIDGE BEAM: N/A	BOT. TRIM: #509 RED	HEAT: 5 kw
INSULATION: R-11 KF	COVERING: 5/32" VINYL PANEL HAMPTON GREY	(1) DRUM LIGHT	VANITY: N/A	COMMODO: (1) STD	CEILING: 1/2" SEASPRAY	SIDING: .024 ALUMINUM	DUCT: 17"x5" fiberglass supply
DECKING: 23/32" T&G ADVANTECH	EXT. INSUL: 11 / OFFICE ONLY	(2) PORCH LIGHTS w/PHOTOCELL	MIRROR: (1)	URINAL:	CEILING: 1/2" SEASPRAY	#115 COLONIAL WHITE	
COVERING:	EXT. DOORS:		SHOWER: N/A	SPECIAL: N/A	INSULATION: R-19 KF	RUN METAL UP TO TOP TRIM	
1/8" (#51830) BLOCK TILE	(2) 36"x80" HD ALUMINUM w/10" VIEW BLOCK w/ LEVER / DRIP CAP		WATER HEATER: (2) 1/2 GAL	IN R.R. @ 3 1/2" AFF	DECKING: 7/16 OSB	TOP TRIM: #509 RED	RETURN AIR: SEE PRINT
COTTAGE TAN	INT. DOORS: (3) 24"x80" 6-PANEL w/ LEVER	(1) 120V DEDICATED w/H RECEPT	GRAB BARS: N/A	ATTIC VENTILATION: SEE PRINT	DECALS:		THERMOSTAT: #2001
	WINDOWS: (4) 46"x27" H/S ML/CL w/ MINI-BLINDS						
	(1) 30"x27" H/S ML/CL w/ MINI-BLINDS						

SHORT BONDING STRAP

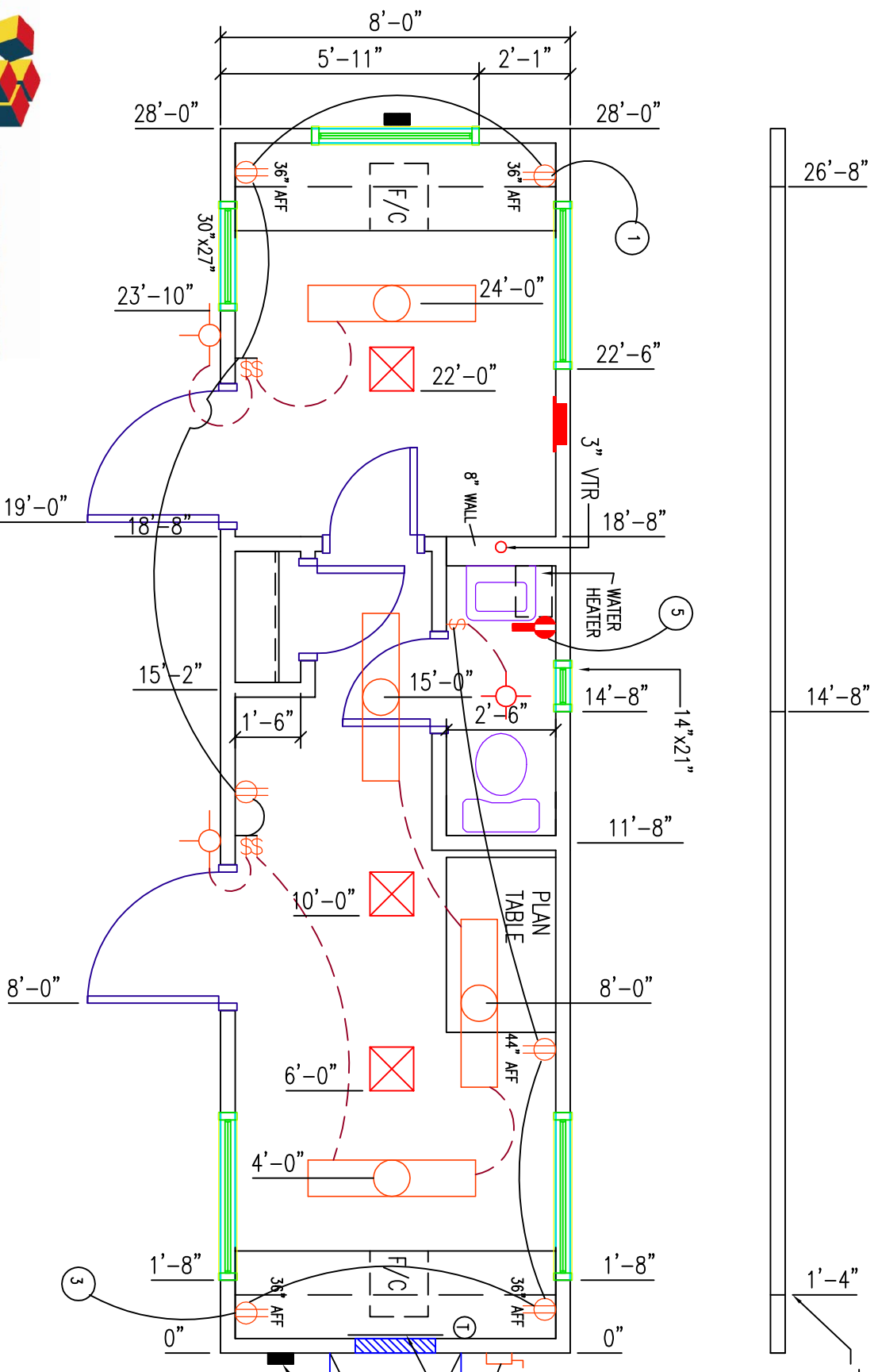
(1) 14"x21 ML/OBSCURE VERTICAL SLIDE
 EXTERIOR DISCONNECT FOR HVAC UNIT

30 AMP EXTERIOR DISCONNECT
 220V #10 WIRE

STUB SUPPLY LINES THRU FLOOR
 CONNECT AND INSULATE

(2) 88 7/16" X24" DESK w/ FILE
 (2) 88 7/16" X 12" OVERHEAD SHELVES
 (1) 48" X 30" FOLDING PLAN TABLE

R.A. OPENING 17 1/2"x10 1/2"



- 0736108
- 0736109
- 0736110
- 0736111
- 0736112



SMART BUILDING
 1-888-420-1113
 www.modulargenius.com

COMPANY: STOCK	SCALE: 1/4"=1'-0"	OCCUPANCY GROUP:	BOX SIZE: 8'X28'
	DRAWN BY: LDL	CODES: NONE	SERIAL NO: SEE ABOVE
	CHECKED BY:	SEALS: NONE	QUOTE NO:
	DATE: 06/27/07	REVISED: 00/00/00	
		APPRVD. BY:	

MODULAR GENIUS

SMART BUILDING



The above photos are representative of "business / commercial" new modular buildings offered by Modular Genius. Please refer to the specifications and floor plans for details. Visit www.modulargenius.com for pricing or contact us at 888-420-1113.

www.modulargenius.com
888-420-1113